



## Zoom User Login

**Note:** The Zoom Desktop / Mobile App must be downloaded before meetings.

### Download Zoom Desktop

Windows Users- [Click Here to Download](#)    Mac Users- [Click Here to Download](#)

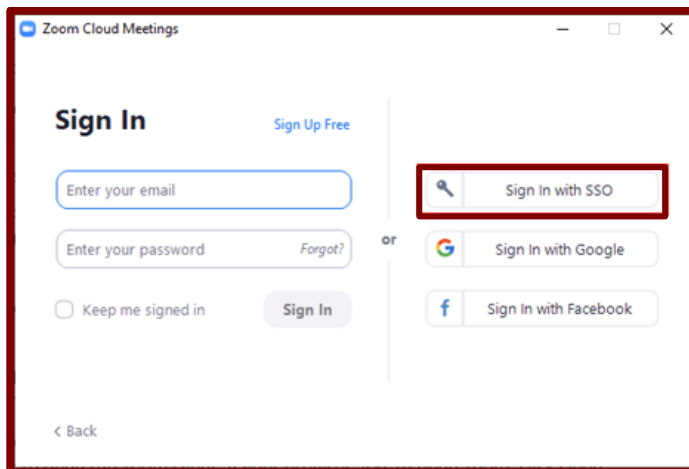
### Download Zoom Mobile

Android- [Click Here to Download](#)    IOS- [Click Here to Download](#)

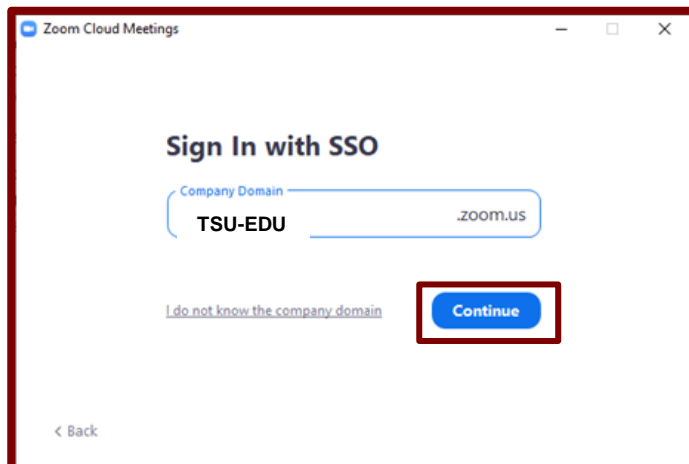
### Windows Users

**Step 1:** Open the Zoom desktop client.

**Step 2:** Select Single Sign On (SSO)



**Step 3:** Enter your school domain (TSU-EDU) and select **continue**.



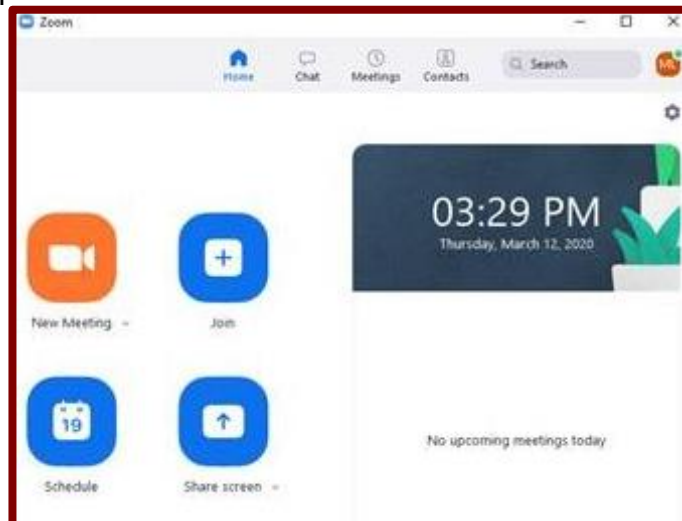


## Zoom User Login

**Step 4:** Login using your TSU login Credentials and select **Sign-In**

**Step 5:** Select **Allow**

**Step 6:** Sign-in successful



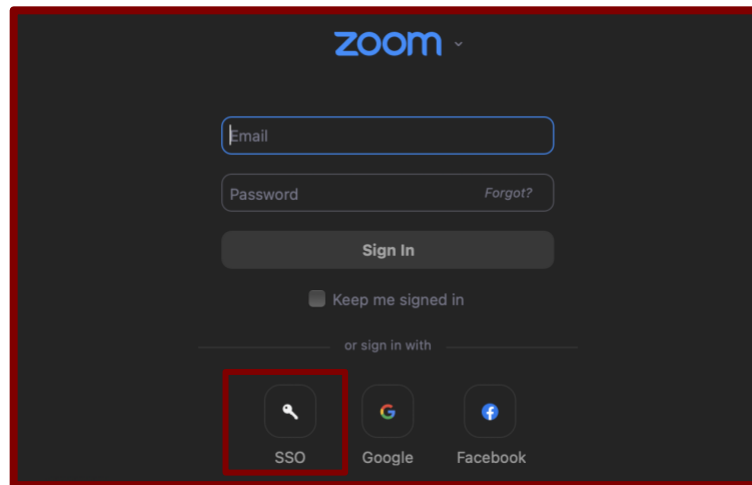


## Zoom User Login

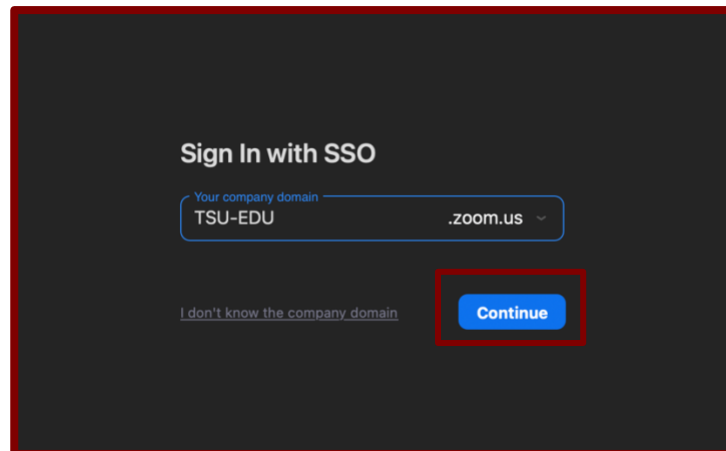
### Mac Users

**Step 1:** Open the Zoom Application

**Step 2:** Select Single Sign On (**SSO**)



**Step 3:** Enter your school domain (**TSU-EDU**) and select **continue**.





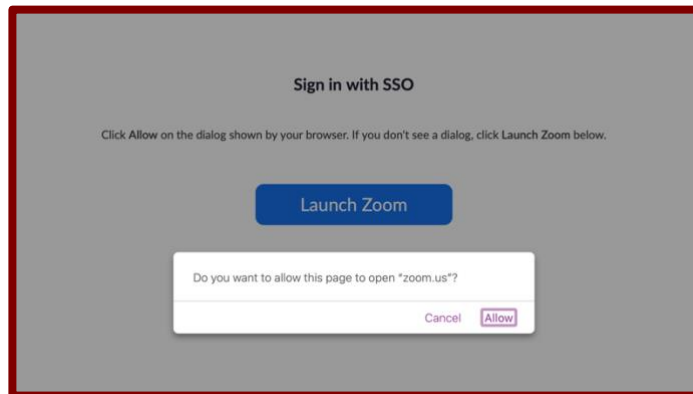
## Zoom User Login

**Step 4:** Login using your TSU login Credentials and select **Sign-In**

The screenshot shows the Zoom 'Sign in' page. At the top left is the TSU logo. Below it, the text 'Sign in' is displayed. A text input field contains the placeholder 'Email, phone, or Skype'. Below the input field is a link that says 'Can't access your account?'. At the bottom of the input area are two buttons: a grey 'Back' button and a blue 'Next' button. At the bottom of the page, there is a grey box with the text: 'To reset your password please visit <https://mypassword.tsu.edu>'.

The screenshot shows the Zoom 'Enter password' page. At the top left is the TSU logo. Below it, the text 'Enter password' is displayed. A password input field is shown with a series of dots and a small eye icon to toggle visibility. Below the input field is a link that says 'Forgot my password'. At the bottom right of the page is a blue 'Sign in' button.

**Step 5:** Select **Allow**



**Step 6:** Sign-in successful

