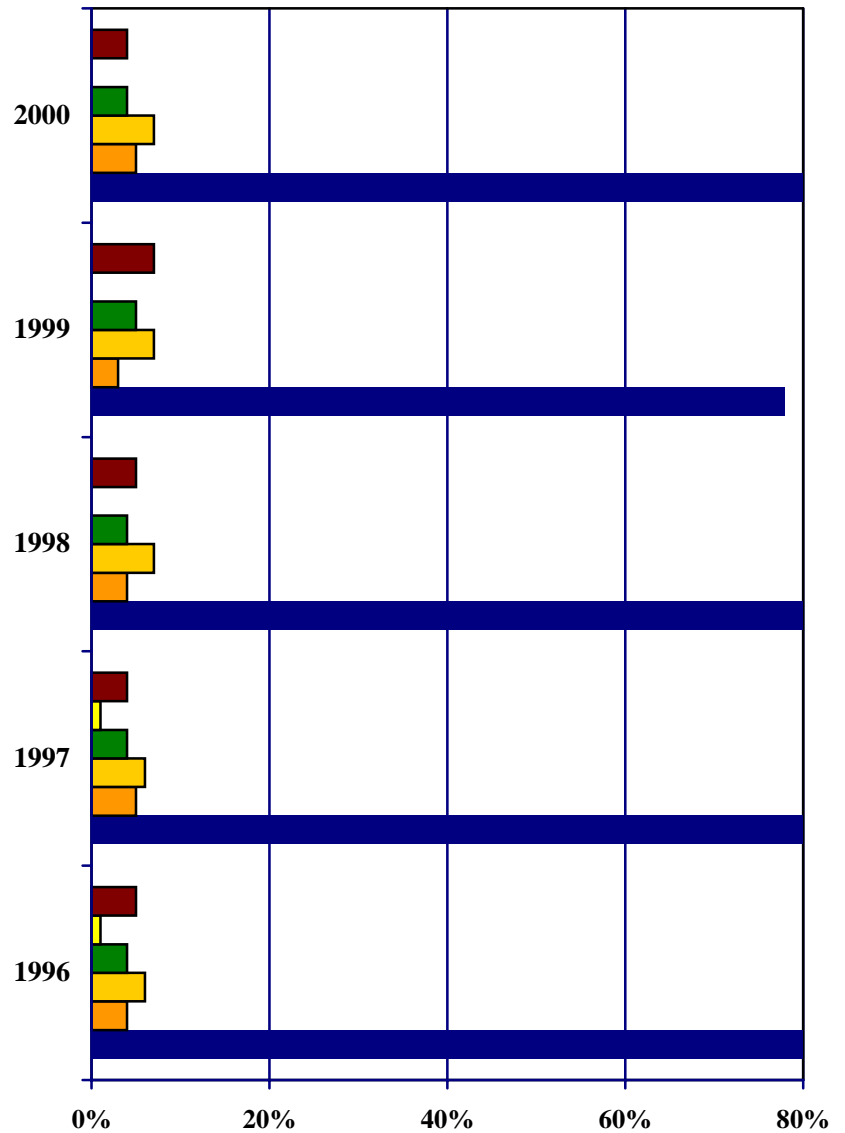
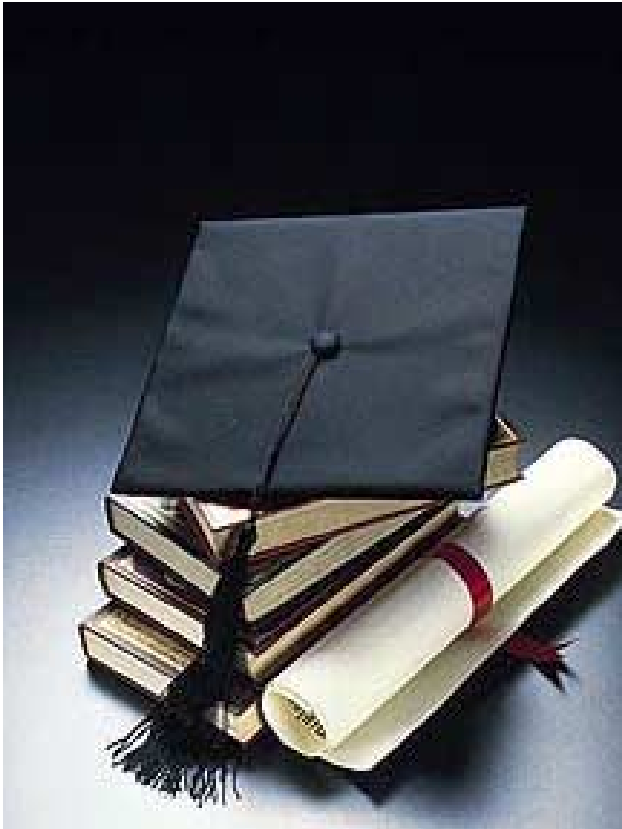


Degrees Awarded by Ethnicity 1996-2000

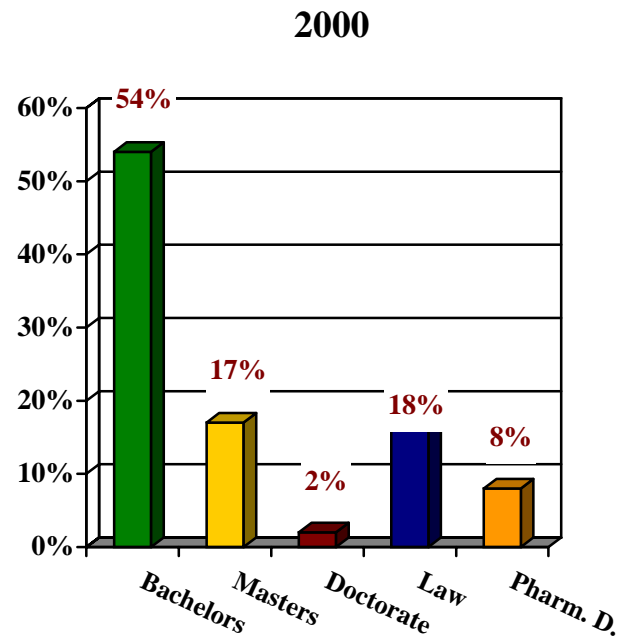
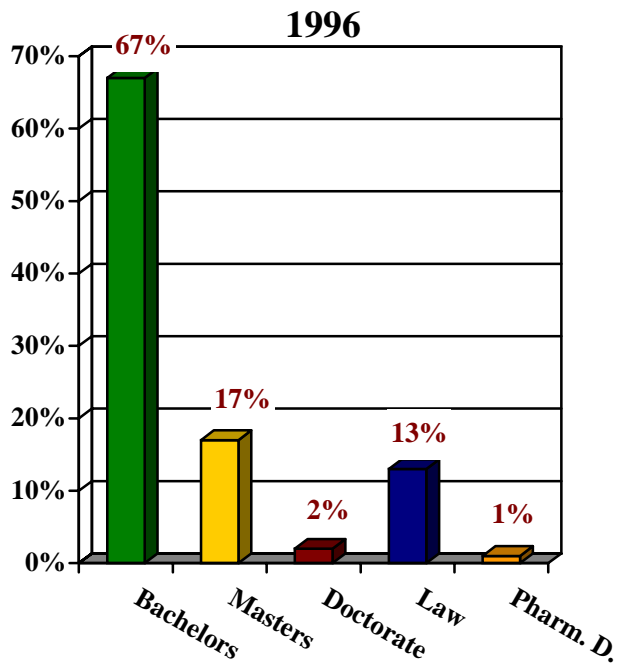


| | 1996 | 1997 | 1998 | 1999 | 2000 |
|--------------------------|------|------|------|------|------|
| ■ Non Resident Alien | 5% | 4% | 5% | 7% | 4% |
| ■ American Islander | 1% | 1% | >1% | >1% | >1 |
| ■ Asian/Pacific Islander | 4% | 4% | 4% | 5% | 4% |
| ■ Hispanic | 6% | 6% | 7% | 7% | 7% |
| ■ White | 4% | 5% | 4% | 3% | 5% |
| ■ Black | 80% | 80% | 80% | 78% | 80% |

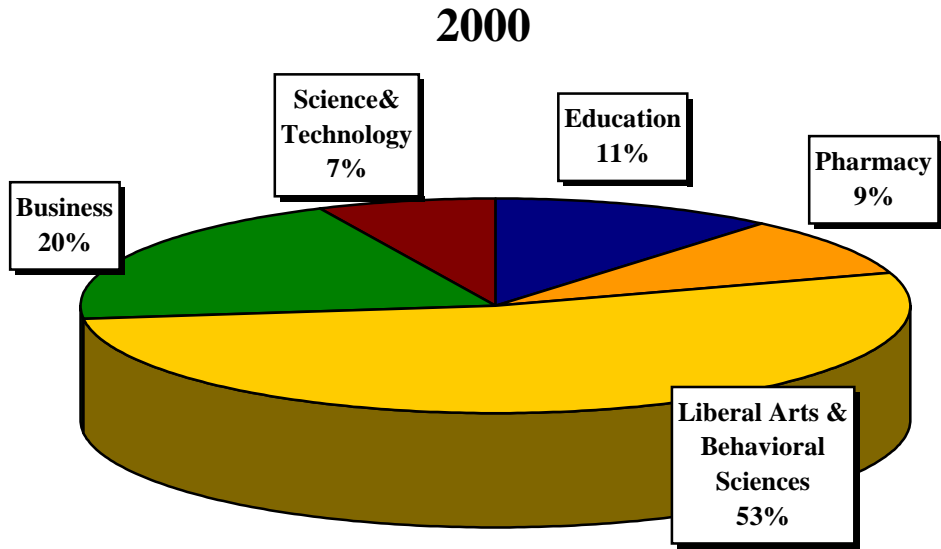


TOTAL DEGREES AWARDED BY LEVEL FALL 1996-2000

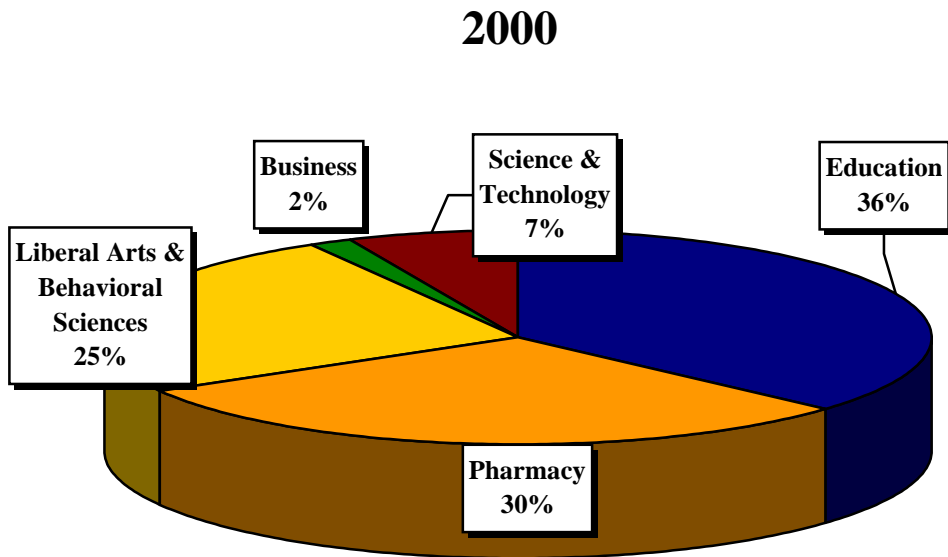
| | 1996 | 1997 | 1998 | 1999 | 2000 |
|--------------|--------------|------------|------------|------------|------------|
| Bachelors | 703 | 634 | 609 | 509 | 465 |
| Masters | 176 | 148 | 93 | 186 | 147 |
| Doctorate | 18 | 22 | 14 | 20 | 19 |
| Law | 141 | 155 | 160 | 156 | 155 |
| Pharm. D. | 15 | 21 | 0 | 0 | 70 |
| TOTAL | 1,053 | 980 | 876 | 871 | 856 |



Percentage of Undergraduate Degrees By School/ College



Percentage of Graduate Degrees By School/ College



**BACHELORS DEGREES CONFERRED
BY SCHOOLS/ COLLEGES
1996 – 2000**

| COLLEGE/ SCHOOL/ DEPARTMENT | 1996 | 1997 | 1998 | 1999 | 2000 |
|---|------------|------------|------------|------------|------------|
| COLLEGE OF LIBERAL ARTS/ BEHAVIORAL SCIENCES | | | | | |
| Communicative Disorders-B.S. | 1 | 0 | 36 | 0 | 0 |
| Communications-B.A. | 34 | 34 | 0 | 33 | 25 |
| Journalism- B.A. | 0 | 0 | 0 | 1 | 0 |
| Speech Communication- B.A. | 0 | 0 | 1 | 2 | 0 |
| Telecommunications- B.A. | 0 | 0 | 0 | 0 | 0 |
| English- B.A. | 7 | 1 | 1 | 2 | 7 |
| French- B.A. | 0 | 1 | 1 | 0 | 1 |
| Spanish- B.A. | 0 | 1 | 1 | 2 | 2 |
| Art- B.A. | 9 | 4 | 6 | 4 | 0 |
| Music- BM | 1 | 0 | 1 | 2 | 0 |
| Theater – Cinema- B.A. | 2 | 0 | 0 | 0 | 0 |
| History- B.A. | 8 | 8 | 10 | 10 | 7 |
| Telecommunications- B.A. | 2 | 0 | 0 | 0 | 0 |
| Apparel Design & Merchandising- B.S. | 0 | 0 | 0 | 0 | 0 |
| Child Development-B.S.HE | 0 | 0 | 0 | 0 | 0 |
| Child & Family Dev.-.B.S.HE | 0 | 0 | 0 | 0 | 0 |
| Clothing & Textiles-B.S.HE | 0 | 0 | 0 | 0 | 0 |
| Dietetics-B.S.DIET | 6 | 7 | 7 | 4 | 4 |
| Food & Nutrition-B.S.HE | 0 | 0 | 15 | 13 | 11 |
| Home Economics-B.S.HE | 0 | 0 | 0 | 0 | 0 |
| Human Services & Consumer Sciences-B.S.HE | 14 | 10 | 0 | 0 | 0 |
| Psychology-B.A. | 9 | 13 | 23 | 35 | 23 |
| Public Affairs-B.S.PAF | 31 | 18 | 13 | 10 | 41 |
| Public Affairs-B.S. | 23 | 48 | 0 | 0 | 7 |
| Political Science- B.A. | 24 | 12 | 13 | 20 | 7 |
| Sociology- B.A. | 25 | 12 | 19 | 18 | 16 |
| Social Work- B.A. | 14 | 18 | 30 | 23 | 20 |
| Pre-Medical- B.S. | 27 | 28 | 0 | 0 | 0 |
| Health & Physical Education, General-B.S. | 0 | 0 | 5 | 2 | 8 |
| Total | 237 | 215 | 182 | 181 | 179 |
| SCHOOL OF BUSINESS | | | | | |
| Accounting- B.B.A. | 39 | 29 | 13 | 33 | 21 |
| Business administration- B.B.A. | 24 | 15 | 0 | 0 | 0 |
| General Business- BB.A. | 65 | 86 | 85 | 72 | 70 |
| Office Supervisor & Management-B.B.A. | 0 | 0 | 17 | 8 | 4 |
| Operation Mgmt-Supervisor – B.B.A | 0 | 0 | 2 | 0 | 0 |
| Total | 128 | 130 | 117 | 113 | 95 |



**BACHELORS DEGREES CONFERRED
BY SCHOOLS/ COLLEGES
1996 – 2000
(Continued)**

| COLLEGE/ SCHOOL/ DEPARTMENT | 1996 | 1997 | 1998 | 1999 | 2000 |
|--|------|------|------|------|------|
| SCHOOL OF SCIENCE AND TECHNOLOGY | | | | | |
| Automated Manuf. Tech.-B.S.IT | 2 | 4 | 4 | 2 | 1 |
| Airway Science Mgt.-B.S. | 12 | 10 | 8 | 5 | 10 |
| Biology-B.S. | 50 | 41 | 44 | 44 | 35 |
| Electromechanical Tech. /Techn. -B.S.ET | 8 | 4 | 13 | 21 | 11 |
| Chemistry-B.S. | 11 | 6 | 6 | 3 | 7 |
| Civil Engineering-B.S.ET | 1 | 4 | 8 | 1 | 0 |
| Computer Science- B.A.-CS | 11 | 9 | 10 | 20 | 12 |
| Construction Technology-B.S.ET | 6 | 3 | 0 | 1 | 0 |
| Drafting & Design Tech. -B.S.ET | 6 | 5 | 5 | 5 | 7 |
| Electronics Eng. Tech-B.S.ET | 12 | 2 | 0 | 1 | 1 |
| Environmental Eng. Tech. -B.S.ET | 5 | 4 | 12 | 15 | 3 |
| Mathematics-B.S. | 0 | 0 | 12 | 9 | 9 |
| Physics- B.S. | 0 | 0 | 0 | 0 | 0 |
| Occupational Safety | 0 | 0 | 0 | 0 | 3 |
| Total | 124 | 92 | 122 | 127 | 99 |
| SCHOOL OF EDUCATION | | | | | |
| Interdisciplinary Studies-B.S. | 0 | 11 | 44 | 44 | 52 |
| Bilingual Education-B.S. | 13 | 4 | 0 | 0 | 0 |
| Early Childhood Education-B.S. | 18 | 14 | 0 | 0 | 0 |
| Elementary Education-B.S. | 15 | 11 | 0 | 0 | 0 |
| Special Education-B.S. | 3 | 5 | 0 | 0 | 0 |
| Health Studies-B.S. | 5 | 3 | 0 | 0 | 0 |
| Human Performance-B.S. | 6 | 5 | 4 | 1 | 0 |
| Total | 60 | 53 | 48 | 45 | 52 |
| COLLEGE OF PHARMACY HEALTH SCIENCES | | | | | |
| Environmental Health-B.S. | 20 | 12 | 0 | 0 | 0 |
| Health Administration-B.S. | 32 | 22 | 21 | 23 | 19 |
| Health Information Management-B.S. | 8 | 11 | 0 | 0 | 7 |
| Medical Record Administration-B.S. | 0 | 0 | 10 | 9 | 2 |
| Medical Technology-B.S.MT | 12 | 12 | 12 | 3 | 3 |
| Pharmacy-B.S.PHR | 73 | 83 | 93 | 0 | 0 |
| Post Baccalaureate Pharmacy-B.S. | 0 | 0 | 0 | 0 | 0 |
| Respiratory Therapy-B.S. | 9 | 4 | 4 | 8 | 9 |
| Total | 154 | 144 | 140 | 43 | 40 |



**GRADUATE AND PROFESSIONAL DEGREES CONFERRED
BY SCHOOLS/ COLLEGES
1996 – 2000**

| COLLEGE/ SCHOOL/ DEPARTMENT | 1996 | 1997 | 1998 | 1999 | 2000 |
|--|-------------|-------------|-------------|-------------|-------------|
| COLLEGE OF EDUCATION MASTER'S | | | | | |
| Administration-M.Ed. | 0 | 0 | 0 | 0 | 0 |
| Bilingual Education-M.Ed. | 0 | 0 | 0 | 0 | 0 |
| Counselor Education-M.Ed. | 12 | 13 | 8 | 27 | 17 |
| Curriculum & Instruction-M.Ed. | 6 | 7 | 3 | 9 | 4 |
| Early Childhood Education-M.Ed. | 0 | 0 | 0 | 0 | 0 |
| Educational Administration-M.Ed. | 24 | 21 | 0 | 31 | 32 |
| Educational Supervision-M.Ed. | 1 | 0 | 17 | 0 | 0 |
| Elementary Education-M.Ed. | 1 | 0 | 0 | 0 | 0 |
| Health-M.S. | 0 | 0 | 0 | 0 | 0 |
| Health Teacher Education-M.Ed. | 0 | 0 | 0 | 13 | 12 |
| Human Performance Graduate-M.S. | 1 | 1 | 0 | 0 | 0 |
| Physical Education-M.S. | 0 | 0 | 0 | 0 | 2 |
| Secondary Education-M.Ed. | 0 | 1 | 0 | 0 | 0 |
| Secondary Teacher Education-M.Ed. | 0 | 0 | 1 | 3 | 0 |
| Special Education, Graduate-M.Ed. | 1 | 0 | 0 | 0 | 0 |
| Supervision-M.Ed. | 0 | 0 | 0 | 0 | 0 |
| Recreation Teacher Ed. | 0 | 0 | 0 | 4 | 0 |
| DOCTORATE | | | | | |
| Ed. Evaluation Research Stat.-Ed.D | 0 | 0 | 0 | 10 | 6 |
| Counselor Education – Ed.D. | 6 | 8 | 6 | 2 | 8 |
| Curriculum & Instruction – Ed.D. | 0 | 5 | 2 | 2 | 1 |
| Educational Administration-Ed.D. | 5 | 2 | 2 | 4 | 3 |
| Higher Education – Ed.D. | 7 | 4 | 4 | 0 | 0 |
| Social Phil. Foundation Education-Ed.D. | 0 | 0 | 0 | 2 | 1 |
| Total | 64 | 62 | 43 | 107 | 86 |
| LIBERAL ARTS/BEHAVIORAL SCIENCES MASTER'S | | | | | |
| Psychology-M.A. | 5 | 10 | 0 | 9 | 8 |
| Sociology-M.A. | 19 | 8 | 4 | 11 | 15 |
| Public Administration-M.P.A. | 17 | 29 | 13 | 18 | 13 |
| Communications-M.A. | 3 | 3 | 2 | 7 | 3 |
| Speech Communication-M.A. | 0 | 0 | 0 | 0 | 0 |
| Telecommunication-M.A. | 0 | 0 | 0 | 0 | 0 |
| English, F. Language, Reading-M.A. | 0 | 0 | 0 | 4 | 4 |
| Music-M.A. | 0 | 0 | 10 | 0 | 0 |
| History-M.A. | 3 | 0 | 3 | 7 | 4 |
| Home Economics-M.A. | 0 | 0 | 1 | 0 | 0 |
| Human Services & Con. Sc.-M.S. | 8 | 8 | 0 | 0 | 0 |
| Food/Nutrition-M.A. | 0 | 0 | 0 | 5 | 6 |
| Total | 55 | 58 | 33 | 61 | 53 |



**GRADUATE AND PROFESSIONAL DEGREES CONFERRED
BY SCHOOLS/ COLLEGES
1996 – 2000
(Continued)**

| COLLEGE/ SCHOOL/ DEPARTMENT | 1996 | 1997 | 1998 | 1999 | 2000 |
|---|-------------|-------------|-------------|-------------|-------------|
| SCHOOL OF BUSINESS | | | | | |
| Accounting | 6 | 4 | 3 | 4 | 2 |
| Admin. Mgt. System Business | 0 | 0 | 0 | 0 | 0 |
| Admin. – M.B.A. | | | | | |
| General Business-M.B.A. | 27 | 23 | 15 | 20 | 0 |
| Total | 33 | 27 | 18 | 24 | 2 |
| SCHOOL OF SCIENCE & TECHNOLOGY | | | | | |
| Industrial Techn., Graduate-M.S. | 9 | 6 | 0 | 0 | 11 |
| Transportation, Planning & Mgt.-M.S. | 18 | 5 | 8 | 0 | 5 |
| Biology-M.S. | 9 | 4 | 2 | 8 | 4 |
| Chemistry-M.S. | 5 | 4 | 2 | 1 | 1 |
| Mathematics-M.S. | 1 | 1 | 1 | 2 | 2 |
| City/Urban/Comm.-M.C.A. | 0 | 0 | 0 | 3 | 2 |
| DOCTORATES | | | | | |
| Environmental Toxicology-Ph.D. | 0 | 3 | 0 | 0 | 0 |
| Total | 42 | 23 | 13 | 14 | 25 |
| LAW SCHOOL | | | | | |
| School of Law | 141 | 155 | 160 | 156 | 155 |
| COLLEGE OF PHARMACY | | | | | |
| Pharmacy – Doctoral – Pharm.D. | 15 | 21 | 0 | 0 | 70 |



