

TOTAL STUDENT ENROLLMENT / FTE*

Fall 2005-2009

	Fall 2005	FTE % Of Head Count	Fall 2006	FTE % Of Head Count	Fall 2007	FTE % Of Head Count	Fall 2008	FTE % Of Head Count	Fall 2009	FTE % Of Head Count
Headcount	11,903		11,224		9,540		9,102		9,394	
FTE	10,180	86	9,778	87	8,187	86	7,820	86	8,120	86

*Full-Time Equivalency (FTE) was computed as 15 semester hours for undergraduate students and 12 semester hours for graduate and professional students.

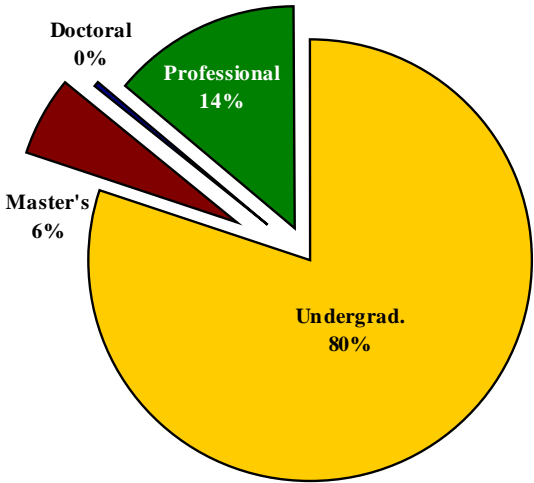


TOTAL STUDENT FTE* BY LEVEL Fall 2005-2009

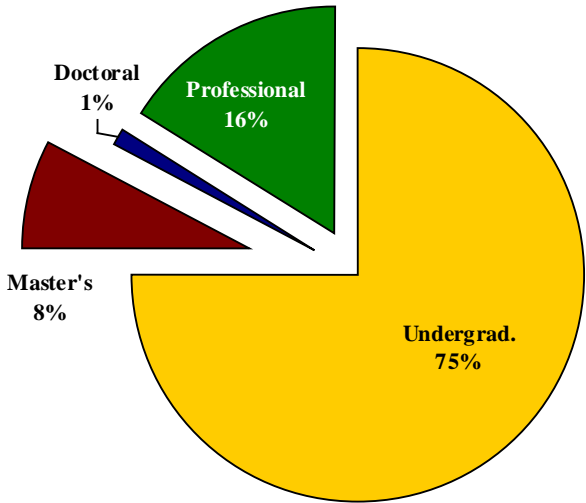
Level	Fall 2005	% of Total	Fall 2006	% of Total	Fall 2007	% of Total	Fall 2008	% of Total	Fall 2009	% of Total
Undergraduates	8,157	80	7,636	78	6,317	77	5,974	76	6,100	75
Master's Students	571	6	506	5	488	6	479	6	611	8
Doctoral Students	24	0	166	2	65	1	96	1	105	1
Professional Students	1,428	14	1,470	15	1,317	16	1,271	16	1,304	16
Total	10,180	100	9,778	100	8,187	100	7,820	100	8,120	100

*Full-Time Equivalency (FTE) was computed as 15 semester hours for undergraduate students and 12 semester hours for graduate and professional students.

**Total Student FTE By Level
Fall 2005**



**Total Student FTE By Level
Fall 2009**



**TOTAL STUDENT SEMESTER CREDIT
HOURS BY LEVEL
Fall 2005-2009**

Level	Fall 2005	% of Total	Fall 2006	% of Total	Fall 2007	% of Total	Fall 2008	% of Total	Fall 2009	% of Total
Undergraduates	122,361	83	114,540	82	94,757	81	89,612	80	91,497	79
Master's Students	6,850	5	6,072	4	5,864	5	5,748	5	7,329	6
Doctoral Students	288	0	1,992	1	775	1	1,155	1	1,257	1
Professional Students	17,137	12	17,640	13	15,800	13	15,248	14	15,649	14
Total	146,636	100	140,246	100	117,196	100	111,763	100	115,732	100



TOTAL STUDENT HEADCOUNT BY SCH LOAD Fall 2005-2009

SCH Load	Fall 2005	% of Total	Fall 2006	% of Total	Fall 2007	% of Total	Fall 2008	% of Total	Fall 2009	% of Total
Less Than 3	36	1	36	0	25	0	32	0	30	0
3 -5	344	3	274	2	277	3	251	3	239	3
6 -8	1,000	9	952	8	920	10	867	10	938	10
9 -11	1,429	12	1,110	10	1,104	12	1,052	12	1,159	12
12 -14	5,181	45	5,416	48	4,432	46	4,266	46	4,235	45
15 -17	2,924	25	2,911	26	2,365	25	2,252	25	2,227	24
18 & Over	564	5	525	5	417	4	382	4	566	6
Total	11,478	100	11,224	100	9,540	100	9,102	100	9,394	100

Source: Texas Higher Education Coordinating Board (Hurricane Katrina students omitted from count). Fall, 2005

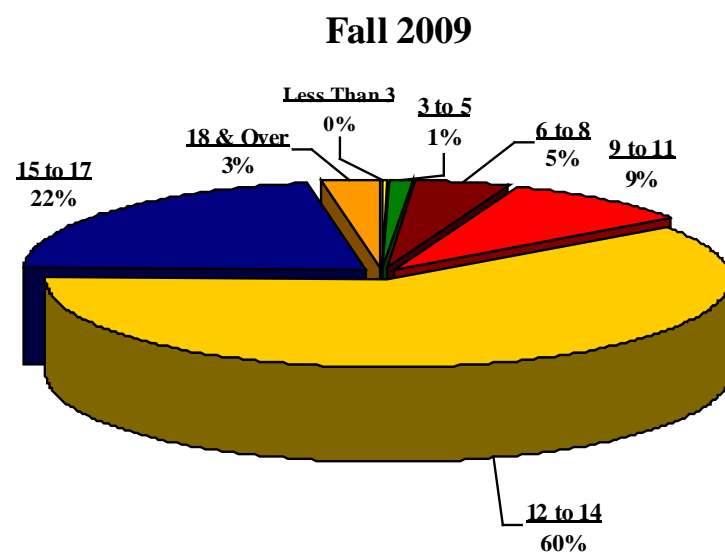
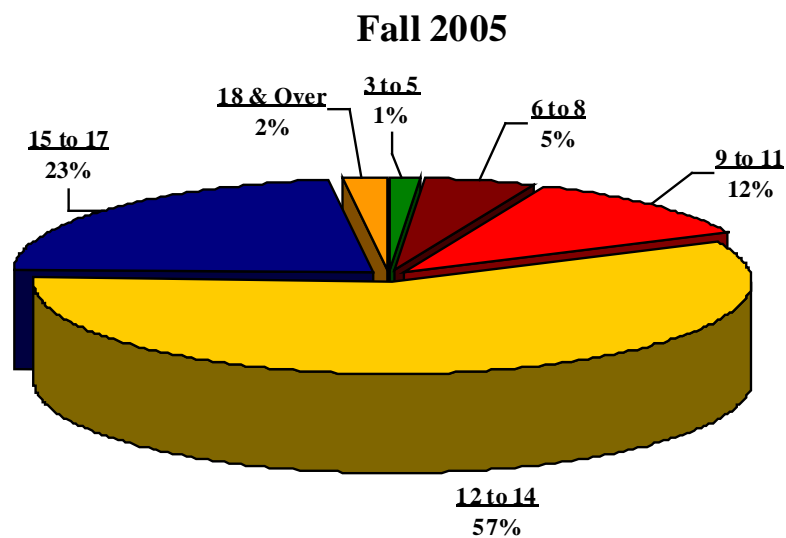


LOWER LEVEL STUDENT HEADCOUNT BY SCH LOAD* Fall 2005-2009

SCH Load	Fall 2005	% of Total	Fall 2006	% of Total	Fall 2007	% of Total	Fall 2008	% of Total	Fall 2009	% of Total
Less Than 3	8	0	5	0	3	0	10	0	9	0
3 - 5	86	1	61	1	60	2	40	2	54	1
6 - 8	308	5	232	4	223	5	150	5	205	5
9 - 11	720	12	461	8	459	10	410	10	413	9
12 - 14	3,539	57	3,534	63	2,597	58	2,643	58	2,703	60
15 - 17	1,395	23	1,324	23	1,025	23	928	23	987	22
18 & Over	120	2	84	1	79	2	61	2	130	3
Total	6,176	100	5,701	100	4,446	100	4,242	100	4,501	100

*Lower level refers to freshmen and sophomore students.

Source: Texas Higher Education Coordinating Board (Hurricane Katrina students omitted from count). Fall, 2005



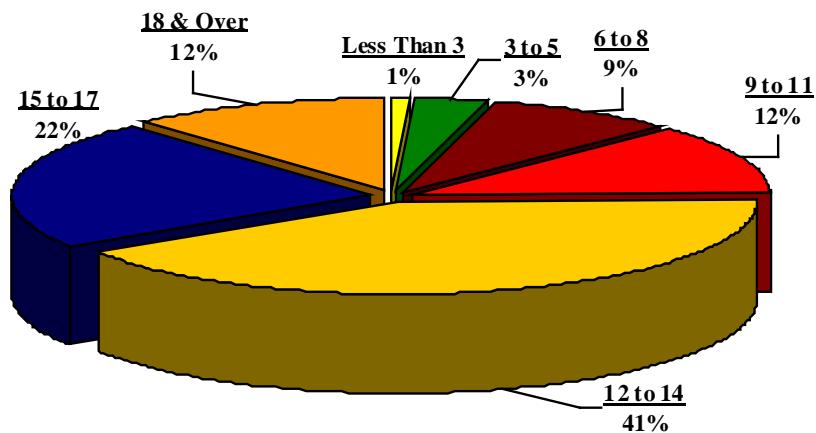
UPPER LEVEL STUDENT HEADCOUNT BY SCH LOAD* Fall 2005-2009

SCH Load	Fall 2005	% of Total	Fall 2006	% of Total	Fall 2007	% of Total	Fall 2008	% of Total	Fall 2009	% of Total
Less Than 3	23	1	27	1	16	1	12	1	10	0
3 - 5	108	3	103	3	112	3	99	3	72	3
6 - 8	283	9	311	9	288	9	274	9	269	10
9 - 11	384	12	350	10	351	11	332	11	319	12
12 - 14	1,325	41	1,483	44	1,371	44	1,250	44	1,223	44
15 - 17	723	22	759	23	712	23	641	23	607	22
18 & Over	380	12	319	10	276	9	273	9	257	9
Total	3,226	100	3,352	100	3,126	100	2,881	100	2,757	100

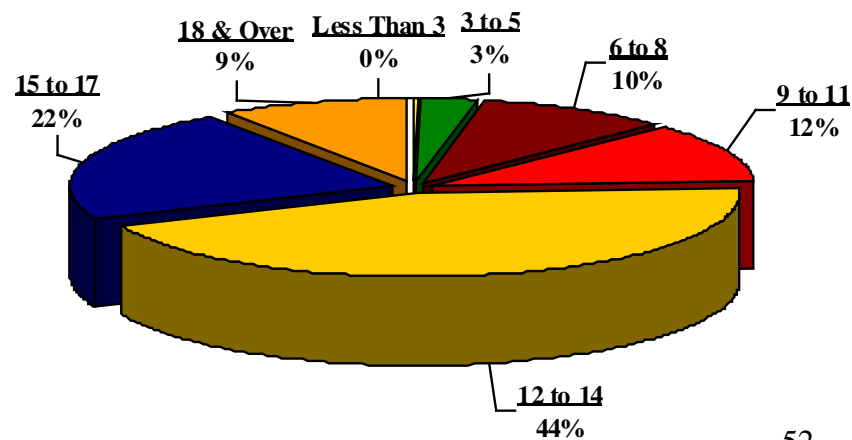
*Upper level refers to junior and senior students.

Source: Texas Higher Education Coordinating Board (Hurricane Katrina students omitted from count). Fall, 2005

Fall 2005



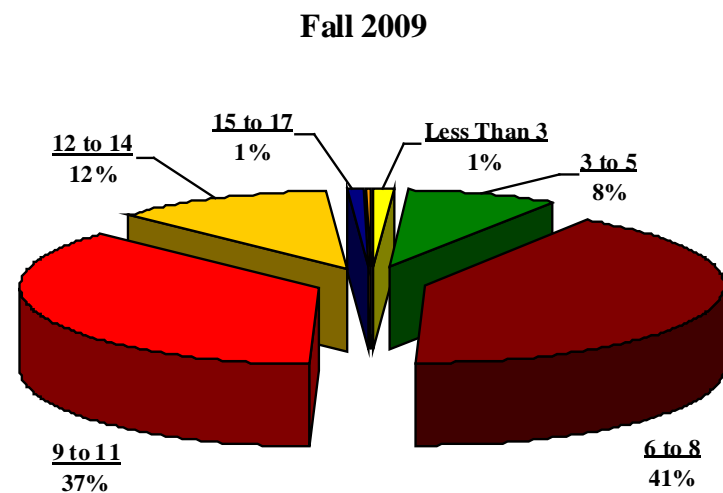
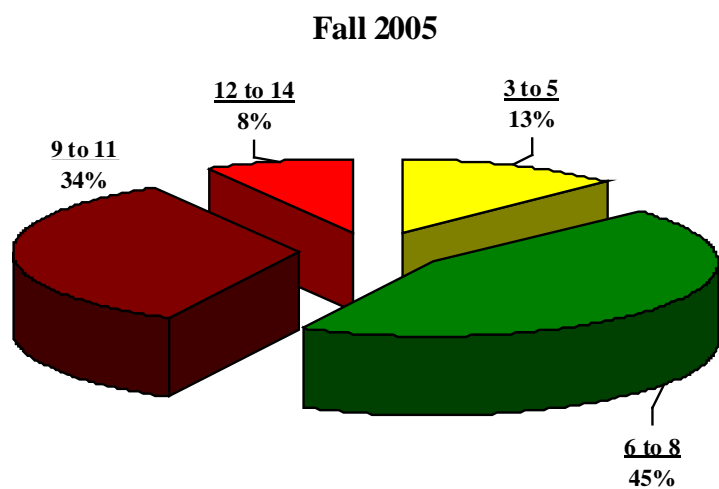
Fall 2009



MASTER'S STUDENT HEADCOUNT BY SCH LOAD Fall 2005 - 2009

SCH Load	Fall 2005	% of Total	Fall 2006	% of Total	Fall 2007	% of Total	Fall 2008	% of Total	Fall 2009	% of Total
Less Than 3	2	0	4	0	5	1	8	1	10	1
3 - 5	91	13	92	11	66	9	73	9	77	8
6 - 8	319	45	342	43	341	44	372	48	394	41
9 - 11	244	34	276	34	256	33	246	31	348	37
12 - 14	59	8	88	11	96	12	75	10	113	12
15 - 17	0	0	6	1	6	1	7	1	9	1
18 & Over	0	0	3	0	2	0	0	0	2	0
Total	715	100	811	100	772	100	781	100	953	100

Source: Texas Higher Education Coordinating Board (Hurricane Katrina students omitted from count). Fall, 2005

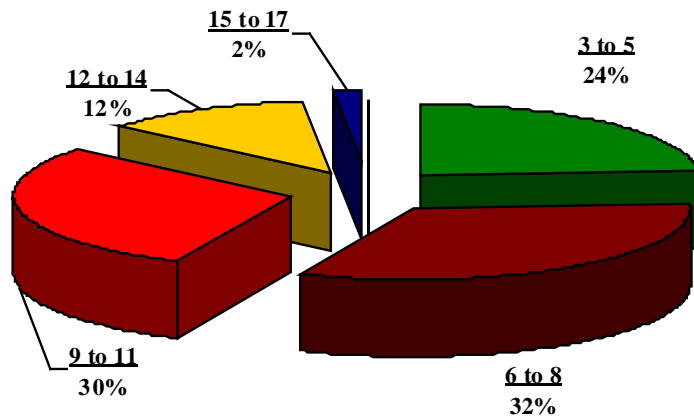


DOCTORAL STUDENT HEADCOUNT BY SCH LOAD Fall 2005 – 2009

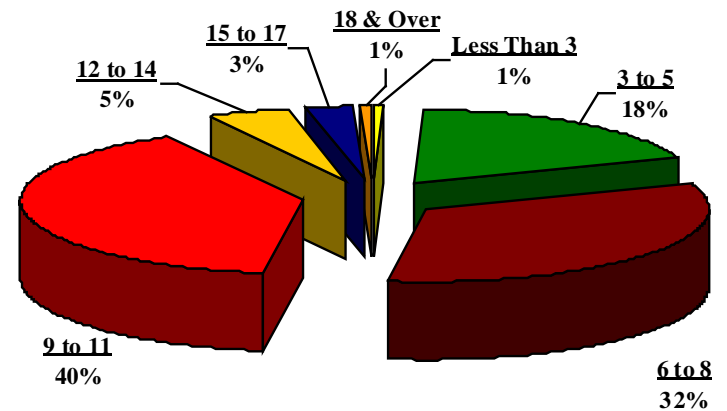
SCH Load	Fall 2005	% of Total	Fall 2006	% of Total	Fall 2007	% of Total	Fall 2008	% of Total	Fall 2009	% of Total
Less Than 3	0	0	1	1	0	0	1	0	1	1
3 – 5	47	24	48	28	29	27	30	20	33	18
6 – 8	64	32	60	35	43	39	45	30	57	32
9 – 11	58	30	47	28	21	19	53	35	69	40
12 – 14	24	12	12	7	8	7	11	7	8	5
15 – 17	3	2	1	1	5	5	8	5	5	3
18 & Over	0	0	0	0	3	3	3	2	1	1
Total	196	100	169	100	109	100	151	100	174	100

Source: Texas Higher Education Coordinating Board (Hurricane Katrina students omitted from count). Fall, 2005

Fall 2005



Fall 2009



PROFESSIONAL STUDENT HEADCOUNT BY SCH LOAD Fall 2005 - 2009

SCH Load	Fall 2005	% of Total	Fall 2006	% of Total	Fall 2007	% of Total	Fall 2008	% of Total	Fall 2009	% of Total
Less Than 3	3	0	0	0	1	0	1	0	0	0
3 - 5	12	1	10	1	10	1	9	1	3	0
6 - 8	26	2	21	2	25	2	18	2	13	1
9 - 11	23	2	12	1	17	2	11	1	10	1
12 - 14	234	20	260	22	360	33	287	28	188	19
15 - 17	803	70	808	68	617	57	668	64	619	61
18 & Over	64	5	80	7	57	5	45	4	176	18
Total	1,165	100	1,191	100	1,087	100	1,039	100	1,009	100

Source: Texas Higher Education Coordinating Board (Hurricane Katrina students omitted from count). Fall, 2005

