

**FRONT PAGE
DIVIDER
ENROLLMENT STATISTICS**



**BACK PAGE
DIVIDER
ENROLLMENT STATISTICS**



TOTAL STUDENT ENROLLMENT / FTE*

Fall 2000 - 2004

	2000	FTE % Of Head Count	2001	FTE % Of Head Count	2002	FTE % Of Head Count	2003	FTE % Of Head Count	2004	FTE % Of Head Count
Headcount	6,886		8,119		9,739		10,888		11,635	
FTE	5,796	84	6,989	86	8,461	87	9,585	88	10,240	88

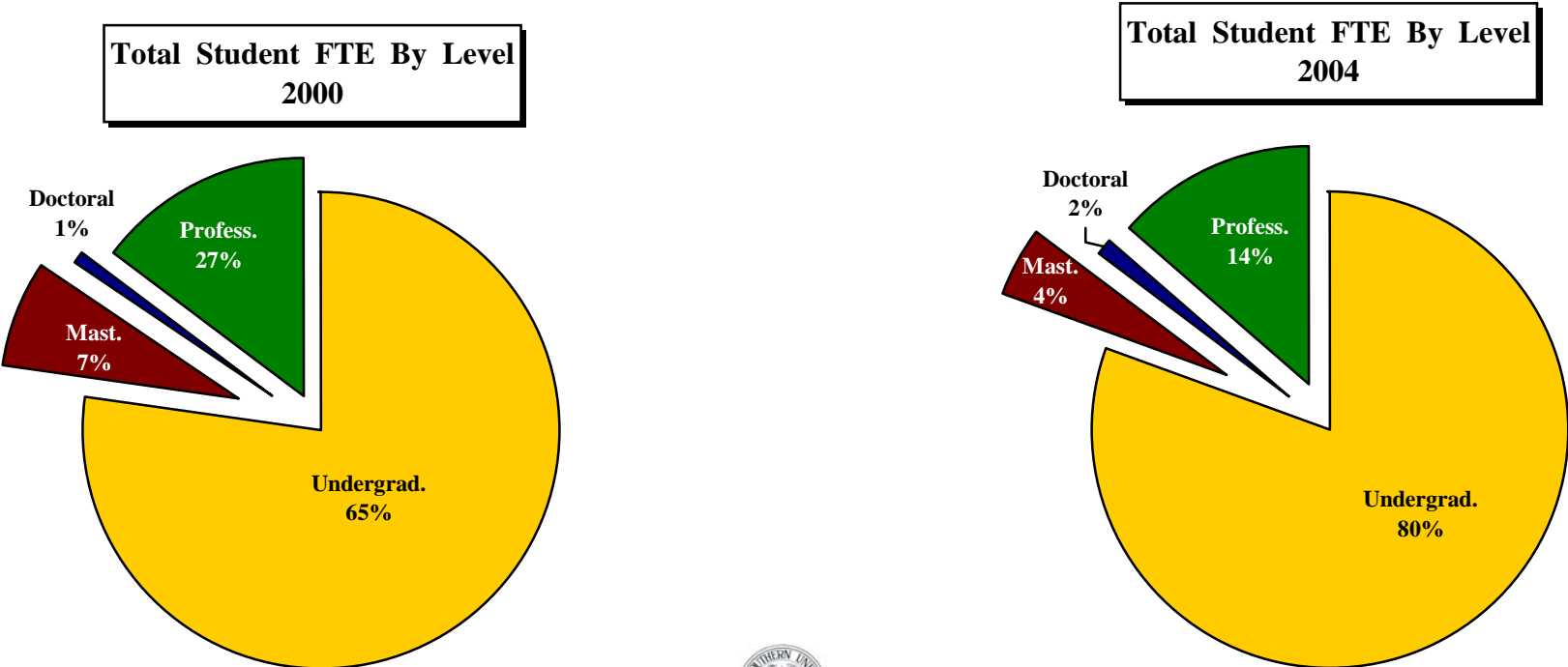
*Full-Time Equivalency (FTE) was computed as 15 semester hours for undergraduate students and 12 semester hours for graduate and professional students.



TOTAL STUDENT FTE* BY LEVEL Fall 2000 – 2004

Level	2000	% of Total	2001	% of Total	2002	% of Total	2003	% of Total	2004	% of Total
Undergraduates	4,480	65	5,665	81	6,803	79	7,731	79	8,175	80
Master's Students	416	7	411	6	378	5	456	5	495	4
Doctoral Students	49	1	41	1	49	1	83	1	169	2
Professional Students	851	27	872	12	1,231	15	1,315	15	1,401	14
Total	5,796	100	6,989	100	8,461	100	9,585	100	10,240	100

*Full-Time Equivalency (FTE) was computed as 15 semester hours for undergraduate students and 12 semester hours for graduate and professional students.



**TOTAL STUDENT SEMESTER CREDIT
HOURS BY LEVEL
Fall 2000 - 2004**

Level	2000	% of Total	2001	% of Total	2002	% of Total	2003	% of Total	2004	% of Total
Undergraduates	67,214	81	84,977	84	102,047	82	115,964	84	122,618	84
Master's Students	5,002	6	4,936	5	4,531	4	5,471	4	5,942	4
Doctoral Students	582	1	487	1	588	1	990	1	2,031	1
Professional Students	10,198	12	10,469	10	14,774	13	15,781	11	16,817	11
Total	82,996	100	100,869	100	121,940	100	138,206	100	147,408	100



TOTAL STUDENT HEADCOUNT BY SCH LOAD FALL 2000 - 2004

SCH Load	2000	% of Total	2001	% of Total	2002	% of Total	2003	% of Total	2004	% of Total
Less Than 3	23	0	33	<1	27	<1	20	<1	10	0
3 -5	434	6	394	5	346	4	292	3	267	2
6 -8	796	12	743	9	817	8	796	7	880	8
9 -11	645	9	634	8	738	8	899	8	1,080	9
12 -14	2,950	43	3,835	47	4,926	51	5,490	51	5,820	50
15 -17	1,625	24	2,029	25	2,358	24	2,816	26	3,061	26
18 & Over	413	6	451	6	527	5	575	5	499	5
Total	6,886	100	8,119	100	9,739	100	10,888	100	11,635	100



LOWER LEVEL STUDENT HEADCOUNT BY SCH LOAD*

FALL 2000 - 2004

SCH Load	2000	% of Total	2001	% of Total	2002	% of Total	2003	% of Total	2004	% of Total
Less Than 3	9	1	14	<1	13	<1	5	<1	9	0
3 - 5	92	3	118	3	110	2	76	1	72	1
6 - 8	165	5	200	4	204	3	194	3	277	4
9 - 11	204	6	239	5	274	5	321	5	455	7
12 - 14	1,991	62	2,898	64	3,931	67	4,289	65	4,217	63
15 - 17	659	20	957	21	1,225	21	1,554	23	1,548	23
18 & Over	106	3	129	3	145	2	176	3	138	2
Total	3,226	100	4,555	100	5,902	100	6,615	100	6,716	100

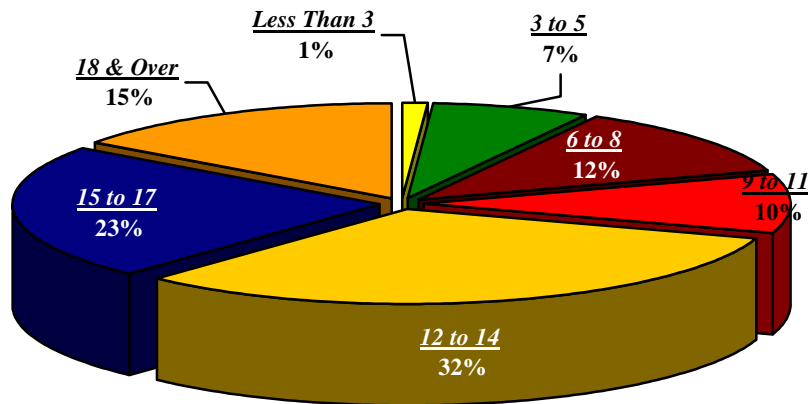


UPPER LEVEL STUDENT HEADCOUNT BY SCH LOAD* FALL 2000 - 2004

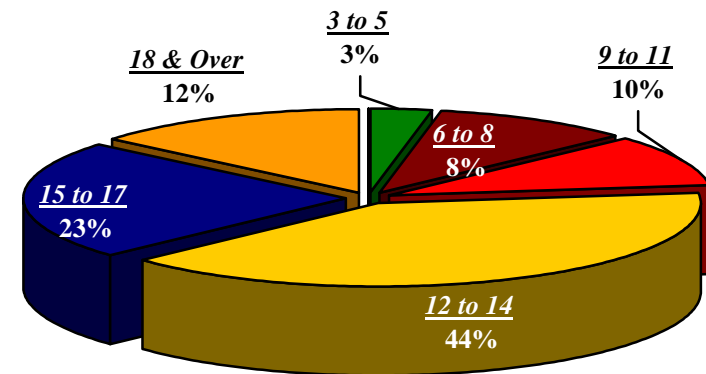
SCH Load	2000	% of Total	2001	% of Total	2002	% of Total	2003	% of Total	2004	% of Total
Less Than 3	10	1	11	1	7	0	9	0	0	0
3 - 5	139	7	100	5	90	5	78	3	100	3
6 - 8	237	12	201	10	217	11	221	10	223	8
9 - 11	208	10	197	10	172	9	226	10	284	10
12 - 14	625	32	626	31	712	36	917	40	1,295	44
15 - 17	461	23	549	28	446	23	537	23	674	23
18 & Over	300	15	306	15	303	16	329	14	317	12
Total	1,980	100	1,990	100	1,946	100	2,317	100	2,911	100

*Upper level refers to junior and senior students.

**Upper Level Student Headcount By SCH Load
2000**



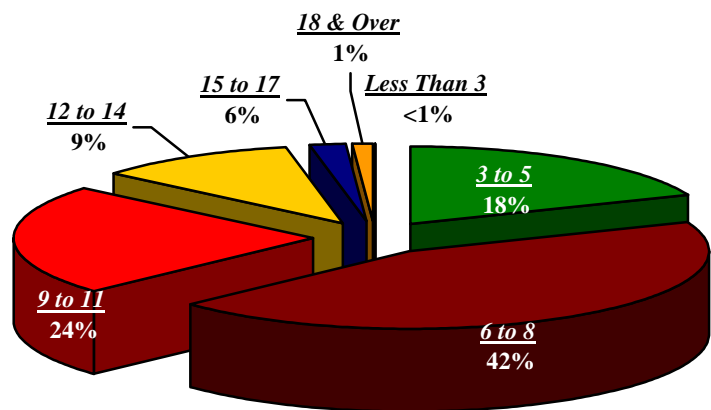
**Upper Level Student Headcount By SCH Load
2004**



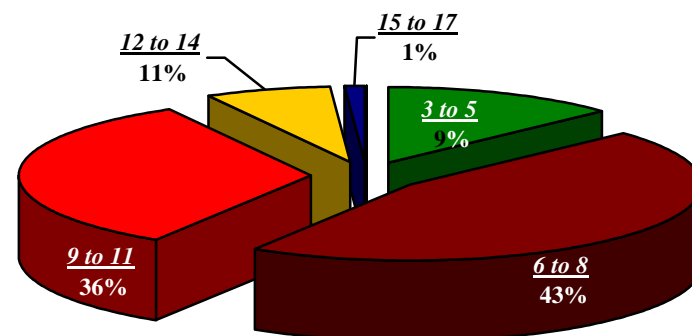
MASTER'S STUDENT HEADCOUNT BY SCH LOAD FALL 2000 - 2004

SCH Load	2000	% of Total	2001	% of Total	2002	% of Total	2003	% of Total	2004	% of Total
Less Than 3	2	<1	4	1	3	0	3	0	1	0
3 - 5	146	18	120	16	93	13	89	12	68	9
6 - 8	354	42	301	39	323	46	296	42	311	43
9 - 11	199	24	168	22	235	33	264	36	260	36
12 - 14	74	9	87	11	46	7	64	9	80	11
15 - 17	55	6	76	10	6	1	7	1	8	1
18 & Over	4	1	7	1	0	0	1	0	1	0
Total	834	100	763	100	706	100	724	100	729	100

**Master's Headcount By SCH Load
2000**



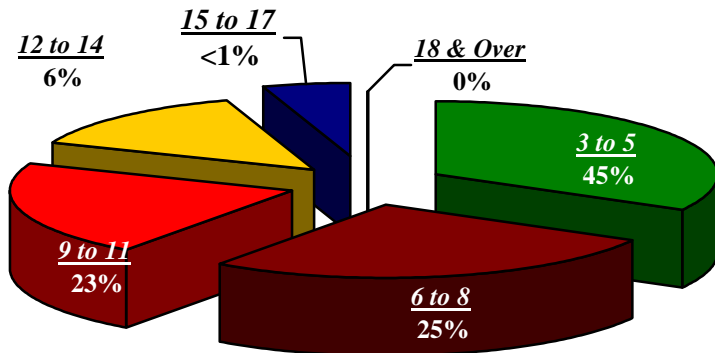
**Master's Headcount By SCH Load
2004**



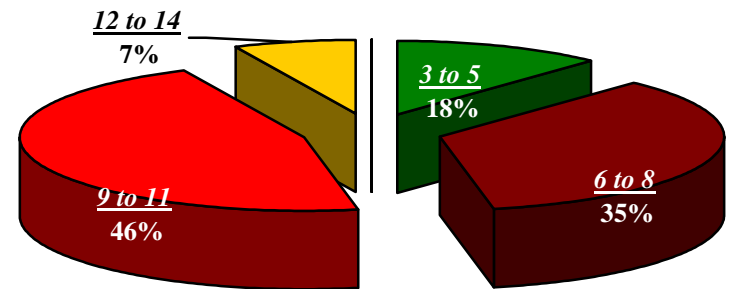
DOCTORAL STUDENT HEADCOUNT BY SCH LOAD FALL 2000 – 2004

SCH Load	2000	% of Total	2001	% of Total	2002	% of Total	2003	% of Total	2004	% of Total
Less Than 3	0	0	0	0	0	0	0	0	0	0
3 – 5	49	45	33	35	32	32	26	18	18	12
6 – 8	27	25	33	35	33	33	48	34	52	35
9 – 11	25	23	23	24	36	35	59	42	67	46
12 – 14	6	6	5	5	0	0	8	6	10	7
15 – 17	1	<1	1	1	0	0	0	0	1	0
18 & Over	0	0	0	0	0	0	0	0	1	0
Total	108	99	95	100	101	100	141	100	149	100

**Doctoral Headcount By SCH Load
2000**



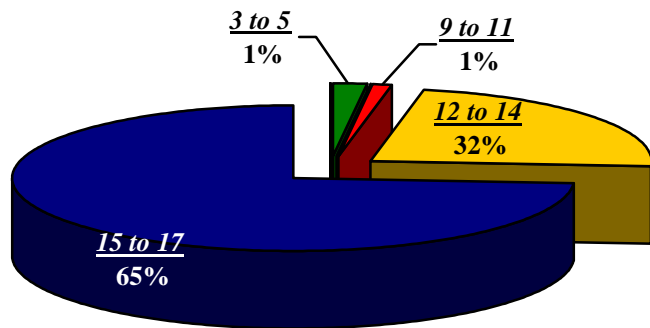
**Doctoral Headcount By SCH Load
2004**



PROFESSIONAL STUDENT HEADCOUNT BY SCH LOAD FALL 2000 - 2004

SCH Load	2000	% of Total	2001	% of Total	2002	% of Total	2003	% of Total	2004	% of Total
Less Than 3	2	0	4	0	4	0	3	0	0	0
3-5	10	1	25	2	21	2	23	2	9	1
6-8	15	1	9	1	40	4	37	3	17	2
9-11	13	1	10	1	21	2	29	3	14	1
12-14	435	32	385	29	237	22	212	19	218	19
15-17	884	65	878	66	682	63	718	67	830	73
18 & Over	4	0	10	1	79	7	69	6	42	4
Total	1,363	100	1,321	100	1,084	100	1,091	100	1,130	100

**Professional Headcount By SCH Load
2000**



**Professional Headcount By SCH Load
2004**

