

**FRONT PAGE
DIVIDER
ENROLLMENT STATISTICS**



**BACK PAGE
DIVIDER
ENROLLMENT STATISTICS**



TOTAL STUDENT ENROLLMENT / FTE*

Fall 2001 - 2005

	2001	FTE % Of Head Count	2002	FTE % Of Head Count	2003	FTE % Of Head Count	2004	FTE % Of Head Count	2005	FTE % Of Head Count
Headcount	8,119		9,739		10,888		11,635		11,903	
FTE	6,989	86	8,461	87	9,585	88	10,240	88	10,180	86

*Full-Time Equivalency (FTE) was computed as 15 semester hours for undergraduate students and 12 semester hours for graduate and professional students.



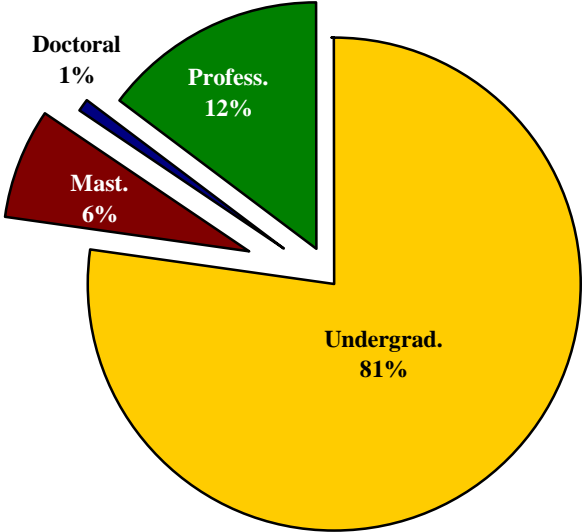
TOTAL STUDENT FTE* BY LEVEL

Fall 2001 – 2005

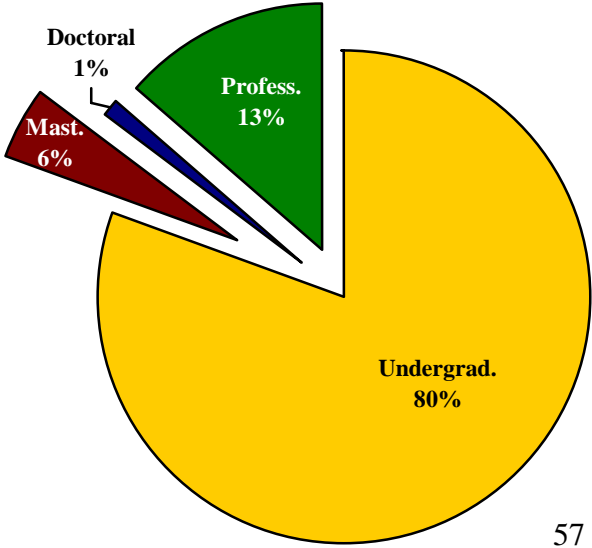
Level	2001	% of Total	2002	% of Total	2003	% of Total	2004	% of Total	2005	% of Total
Undergraduates	5,665	81	6,803	79	7,731	79	8,175	80	8,157	80
Master's Students	411	6	378	5	456	5	495	4	571	6
Doctoral Students	41	1	49	1	83	1	169	2	24	0
Professional Students	872	12	1,231	15	1,315	15	1,401	14	1,428	14
Total	6,989	100	8,461	100	9,585	100	10,240	100	10,180	100

*Full-Time Equivalency (FTE) was computed as 15 semester hours for undergraduate students and 12 semester hours for graduate and professional students.

**Total Student FTE By Level
2001**



**Total Student FTE By Level
2005**



**TOTAL STUDENT SEMESTER CREDIT
HOURS BY LEVEL
Fall 2001 - 2005**

Level	2001	% of Total	2002	% of Total	2003	% of Total	2004	% of Total	2005	% of Total
Undergraduates	84,977	84	102,047	82	115,964	84	122,618	84	122,361	83
Master's Students	4,936	5	4,531	4	5,471	4	5,942	4	6,850	5
Doctoral Students	487	1	588	1	990	1	2,031	1	288	0
Professional Students	10,469	10	14,774	13	15,781	11	16,817	11	17,137	12
Total	100,869	100	121,940	100	138,206	100	147,408	100	146,636	100



TOTAL STUDENT HEADCOUNT BY SCH LOAD FALL 2001 - 2005

SCH Load	2001	% of Total	2002	% of Total	2003	% of Total	2004	% of Total	2005	% of Total
Less Than 3	33	<1	27	<1	20	<1	10	0	36	1
3 -5	394	5	346	4	292	3	267	2	344	3
6 -8	743	9	817	8	796	7	880	8	1,000	9
9 -11	634	8	738	8	899	8	1,080	9	1,429	12
12 -14	3,835	47	4,926	51	5,490	51	5,820	50	5,181	45
15 -17	2,029	25	2,358	24	2,816	26	3,061	26	2,924	25
18 & Over	451	6	527	5	575	5	499	5	564	5
Total	8,119	100	9,739	100	10,888	100	11,635	100	11,478	100

Source: Texas Higher Education Coordinating Board (Hurricane Katrina students omitted from count). Fall, 2005



LOWER LEVEL STUDENT HEADCOUNT BY SCH LOAD*

FALL 2001 - 2005

SCH Load	2001	% of Total	2002	% of Total	2003	% of Total	2004	% of Total	2005	% of Total
Less Than 3	14	<1	13	<1	5	<1	9	0	8	0
3 - 5	118	3	110	2	76	1	72	1	86	1
6 - 8	200	4	204	3	194	3	277	4	308	5
9 - 11	239	5	274	5	321	5	455	7	720	12
12 - 14	2,898	64	3,931	67	4,289	65	4,217	63	3,539	57
15 - 17	957	21	1,225	21	1,554	23	1,548	23	1,395	23
18 & Over	129	3	145	2	176	3	138	2	120	2
Total	4,555	100	5,902	100	6,615	100	6,716	100	6,176	100

Source: Texas Higher Education Coordinating Board (Hurricane Katrina students omitted from count). Fall, 2005



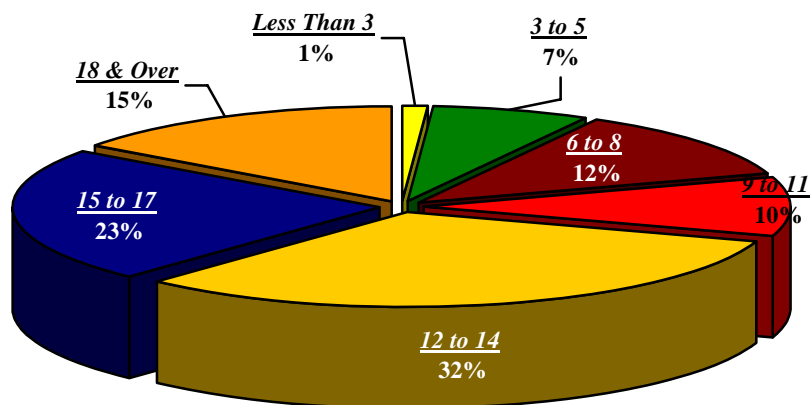
UPPER LEVEL STUDENT HEADCOUNT BY SCH LOAD* FALL 2001 - 2005

SCH Load	2001	% of Total	2002	% of Total	2003	% of Total	2004	% of Total	2005	% of Total
Less Than 3	11	1	7	0	9	0	0	0	23	1
3 -5	100	5	90	5	78	3	100	3	108	3
6 - 8	201	10	217	11	221	10	223	8	283	9
9 - 11	197	10	172	9	226	10	284	10	384	12
12 - 14	626	31	712	36	917	40	1,295	44	1,325	41
15 - 17	549	28	446	23	537	23	674	23	723	22
18 & Over	306	15	303	16	329	14	317	12	380	12
Total	1,990	100	1,946	100	2,317	100	2,911	100	3,226	100

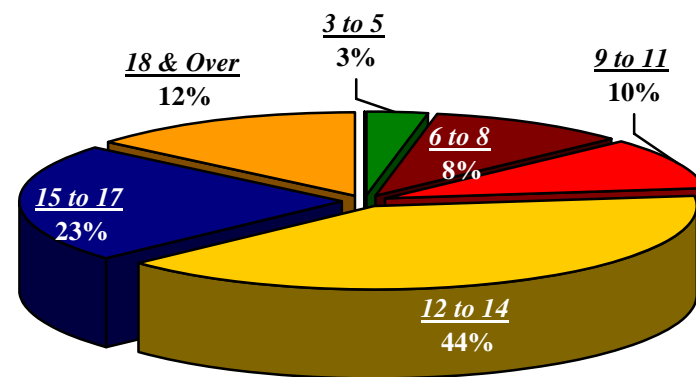
*Upper level refers to junior and senior students.

Source: Texas Higher Education Coordinating Board (Hurricane Katrina students omitted from count). Fall, 2005

**Upper Level Student Headcount By SCH Load
2001**



**Upper Level Student Headcount By SCH Load
2005**

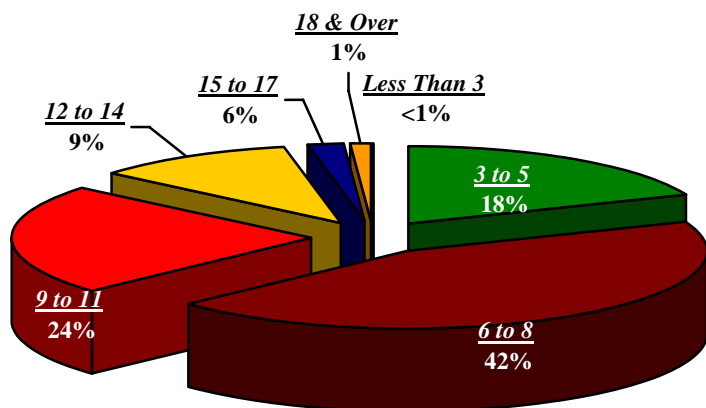


MASTER'S STUDENT HEADCOUNT BY SCH LOAD FALL 2001 - 2005

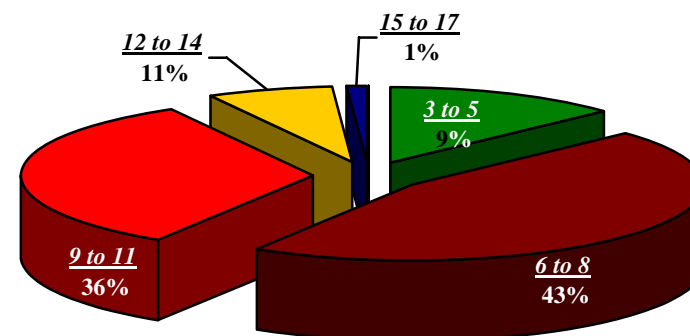
SCH Load	2001	% of Total	2002	% of Total	2003	% of Total	2004	% of Total	2005	% of Total
Less Than 3	4	1	3	0	3	0	1	0	2	0
3 - 5	120	16	93	13	89	12	68	9	91	13
6 - 8	301	39	323	46	296	42	311	43	319	45
9 - 11	168	22	235	33	264	36	260	36	244	34
12 - 14	87	11	46	7	64	9	80	11	59	8
15 - 17	76	10	6	1	7	1	8	1	0	0
18 & Over	7	1	0	0	1	0	1	0	0	0
Total	763	100	706	100	724	100	729	100	715	100

Source: Texas Higher Education Coordinating Board (Hurricane Katrina students omitted from count). Fall, 2005

**Master's Headcount By SCH Load
2001**



**Master's Headcount By SCH Load
2005**

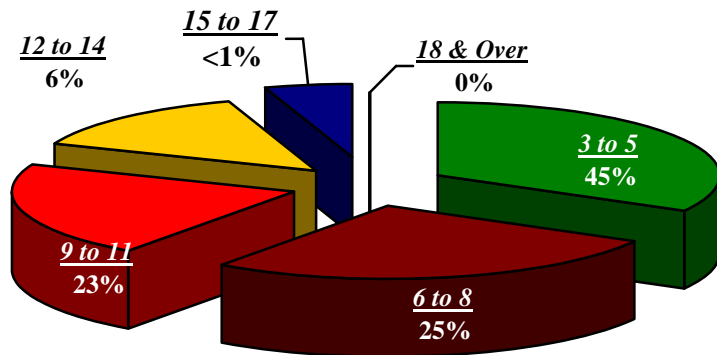


DOCTORAL STUDENT HEADCOUNT BY SCH LOAD FALL 2001 – 2005

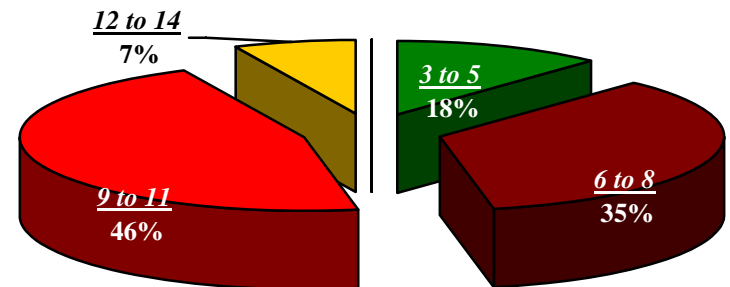
SCH Load	2001	% of Total	2002	% of Total	2003	% of Total	2004	% of Total	2005	% of Total
Less Than 3	0	0	0	0	0	0	0	0	0	0
3 – 5	33	35	32	32	26	18	18	12	47	24
6 – 8	33	35	33	33	48	34	52	35	64	32
9 – 11	23	24	36	35	59	42	67	46	58	30
12 – 14	5	5	0	0	8	6	10	7	24	12
15 – 17	1	1	0	0	0	0	1	0	3	2
18 & Over	0	0	0	0	0	0	1	0	0	0
Total	95	100	101	100	141	100	149	100	196	100

Source: Texas Higher Education Coordinating Board (Hurricane Katrina students omitted from count). Fall, 2005

**Doctoral Headcount By SCH Load
2001**



**Doctoral Headcount By SCH Load
2005**

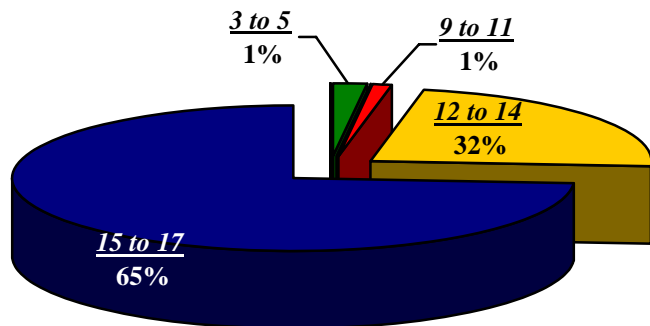


PROFESSIONAL STUDENT HEADCOUNT BY SCH LOAD FALL 2001 - 2005

SCH Load	2000	% of Total	2001	% of Total	2002	% of Total	2003	% of Total	2004	% of Total
Less Than 3	4	0	4	0	3	0	0	0	3	0
3 – 5	25	2	21	2	23	2	9	1	12	1
6 – 8	9	1	40	4	37	3	17	2	26	2
9 – 11	10	1	21	2	29	3	14	1	23	2
12 – 14	385	29	237	22	212	19	218	19	234	20
15 – 17	878	66	682	63	718	67	830	73	803	70
18 & Over	10	1	79	7	69	6	42	4	64	5
Total	1,321	100	1,084	100	1,091	100	1,130	100	1,165	100

Source: Texas Higher Education Coordinating Board (Hurricane Katrina students omitted from count). Fall, 2005

**Professional Headcount By SCH Load
2001**



**Professional Headcount By SCH Load
2005**

