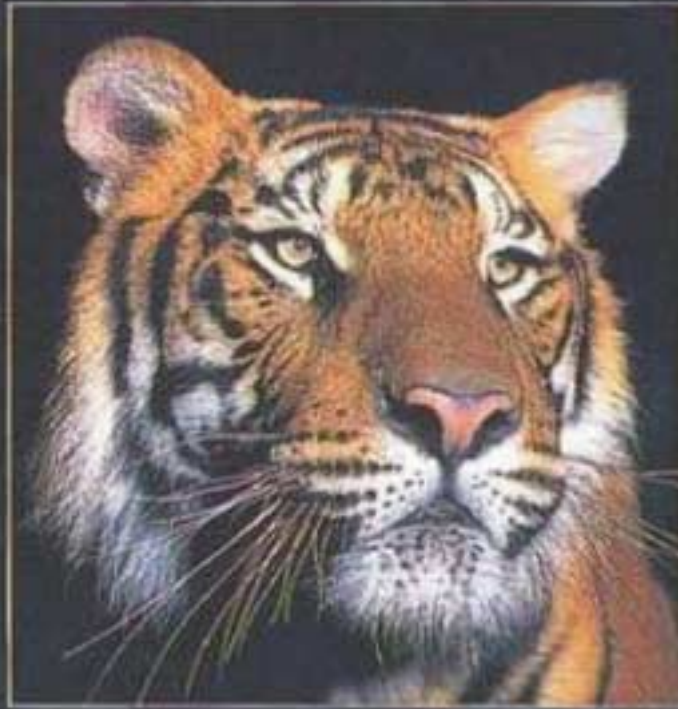




TEXAS SOUTHERN UNIVERSITY

FACT BOOK
1996 - 2000

HOUSTON, TEXAS



INSTITUTIONAL EFFECTIVENESS

JULY 2001



TEXAS SOUTHERN UNIVERSITY * FACT BOOK 1996-2000

OFFICE OF INSTITUTIONAL
EFFECTIVENESS

Clara Bowman
Research Analyst
bowman_cm@tsu.edu

Raijanel S. Crockem
Records Management Coordinator
crockem_rs@tsu.edu

Beverly Hinkle
Assistant Coordinator, Title III
hinkle_ba@tsu.edu

Hasan Jamil
Enrollment Services Coordinator
jamil_hx@tsu.edu

Rhonda Levi
Office Manager
levi_rl@tsu.edu

Veon McReynolds, Ph.D.
Assessment Coordinator
mcreynolds_vx@tsu.edu

Gayla B. Thomas, Ph.D.
Senior Vice President, Enrollment Management & Planning
thomas_gb@tsu.edu

The Office of Institutional Effectiveness at Texas Southern University publishes
TSU Facts 1996-2000

Hannah Hall, Room 315, 3100 Cleburne Avenue Houston, Texas 77004
E-Mail: InstitutionalEffectiveness@tsu.edu
Phone: 713-313-1059
Fax: 713-313-7969

Copyright © 2001 Texas Southern University
Funding provided by the Department of Education





PREFACE

The information presented here was collected and organized by the Office of Institutional Effectiveness. This office serves as the clearinghouse for official University statistics to promote consistency in reporting and the provision of timely and accurate information. Accordingly, all information provided was collected from official University files, with the primary data source being the Texas Higher Education Coordinating Board CBM reports. These reports are submitted by the University for funding and monitoring purposes and therefore represent official institutional statistics used for reporting to federal, state, and local agencies.

The data included here are presented in hard copy, but are also available in an electronic format. The electronic version of this report is available on-line. To access this information you should use the following address: <http://www.tsu.edu/InstitutionalEffectiveness>. If you have any comments or suggestions please let us hear from you.



TABLE OF CONTENTS

General Information

A Brief Profile.....	2
Historical Highlights.....	3
Spring 2000 Facts in Brief	5
Mission Statement.....	6

Academic Resources

University and Academic Units' Accreditation Status	8
Robert James Terry Library Statistics.....	9

Student Enrollment Information

Profile of Enrolled Students.....	10
Fall Headcount Enrollment Comparisons	11
Percentage of Enrollment by Gender	12
First-Time Entered Students by Source	13
Total Headcount by Tuition Status	14
Enrollment by Classification.....	15
Total Headcount by Age Distribution.....	17
Gender Distribution of Student Headcount by Level	18
Ethnic Origin Distribution of Student Headcount by Level	19
In-State Headcount by County.....	21
Enrollment by State of Residence.....	34
Out-of-the Country Enrollment by Residence	38
Percentage of Enrollment by Gender.....	44
Total Enrollment by Classification	45
Total Fall Headcount Enrollment Comparisons	46
Student Enrollment by College/Schools	47
Profile of Enrolled	
Education Students.....	48
Liberal Arts & Behavioral Sciences Students.....	48
Science & Technology Students	49
Business Students.....	49
Pharmacy Students.....	50
Law Students.....	50



TABLE OF CONTENTS (Continued)

Enrollment Statistics

Total Student FTE by Level.....	51
Total Headcount by SCH Load.....	52
Lower Division Headcount by SCH Load.....	52
Upper Division Headcount by SCH Load	53
Master's Headcount by SCH Load	54
Doctoral Headcount by SCH Load	55
Professional Student Headcount by SCH Load	56

Curricular Information

Student Credit Hours.....	57
Enrollment by Major	
College of Liberal Arts & Behavioral Sciences.....	58
School of Business.....	61
College of Education.....	62
School of Technology	64
College of Pharmacy & Health Sciences	65
Law School	66
Performance on Key Curricular Measures.....	67

Graduation Information

Total Degrees Awarded by Ethnicity.....	68
Total Degrees Awarded by Level	69
Percentage of Undergraduate Degrees by School/College	70
Bachelor's Degrees Conferred by College	71
Graduate and Professional Degrees Conferred by College.....	73

Financial Aid Information

Financial Aid for Fall 1999 Cohort of Full-time, First-Time	
Degree Seeking Undergraduate Students.....	75
Student Financial Aid Allocations	76

Faculty and Staff Information

Total Faculty Headcount by Gender	77
---	----



Total Faculty Headcount by Ethnic Origin	78
Total Faculty Headcount by Tenure Status	79
Total Faculty Headcount by Academic Rank	80

Business and Finance

Budgeted Dollars by Source of Funds	81
Budgeted Dollars by Expenditure Category	81
Actual Revenues by Funding Categories	82
Distribution of Actual Revenues by Source of Funds	83
Actual Expenditures by Funding Categories	84
Distribution of Expenditures	85



Texas Southern University Board of Regents

2000-2001

<u>Regent</u>	<u>Home</u>	<u>Term</u>
Mr. David Diaz	Corpus Christi	2001-2005
Ms. Regina Giovannini	Houston	1995-2005
Mr. Alphonso Jackson	Dallas	1995-2003
Mr. Willard L. Jackson, Jr.	Houston	1999-2005
Mr. J. Paul Johnson	Houston	2001-2007
Mr. A. Martin Wickliff, Jr.*	Houston	1997-2003
Mr. George Williams	Houston	2000-2001
Mr. Gerald Wilson	Houston	2000-2001
Mr. Fred S. Zeidman	Houston	1997-2003

***Chairman**

